



Executive Summary

Eastern Marine Services, Inc. is a full-service commercial diving and marine construction firm. We have been successfully performing commercial diving and heavy marine construction operations for over two decades. We have taken projects from the design stage through to completion, and we pride ourselves on our ability to work within the needs and budgets of our customers while safely performing quality work. We have performed many diverse projects including Pier Rehabilitation, Concrete Bridge Substructure Repair, Steel Pile Repairs, Ships Husbandry, and more. We have the technical expertise, experience, personnel, and equipment to successfully handle any and all of your diving and marine construction needs.

Project Approach

Practices and Procedures

Once a new project is received and a job number assigned and set up in our computer system, a crew assignment and equipment list is established. The assigned Supervisor reviews the job information and assembles the crew. Any job-specific training will be provided for the crew. The supervisor will be responsible for ensuring the job number appears on all documents pertaining to that job. Any necessary materials are ordered and a work and delivery schedule established. Subcontractors, if any, are notified and the work aligned. Then mobilization of equipment begins. As the job progresses, a weekly schedule is completed by Tuesday of each week and reviewed by the Project Manager. The Supervisor oversees the crew and maintains contact with regard to start times, changes in schedule, etc. The Supervisor is also responsible for all the equipment and ensuring it is properly checked out and back in. The Supervisor will locate and set up proper on-site storage work areas with consideration to safety, availability, theft protection, and any other job-specific considerations. Equipment is

inspected daily and the Supervisor and Project Manager review all safety concerns. The Supervisor is responsible for on-site safety. The Supervisor completes Daily Time Sheets which are turned in to our office at the end of each day; Dive Logs which document all times, decompression schedules, depths, etc. and are turned in to our office at the end of each day; and a Dive Plan for each dive which is reviewed with the crew daily, prior to diving and is completed and turned in daily if diving varies, otherwise weekly. The Supervisor is responsible for the on-site Hazard Communication Program. A checklist is completed at the beginning of the job, and monthly thereafter. It is reviewed with each employee at the start of the project, and each new employee thereafter. A copy of the plan is kept on-site at all times along with an MSDS sheet for every substance on site. The Supervisor holds weekly safety meetings on site. The Supervisor also checks materials at the time of delivery for correctness: Proper size and quantity, quality control, MSDS and any necessary certifications included. A Production Report is completed at the end of each week and turned in to the Project Manager. The Production Report records the schedule of completed work. All written correspondence is handled by the Project Manager who oversees the Supervisor as well as the complete job. All Extra Work Authorizations and Change Orders are processed through the Project Manager. Throughout the course of the project, the work flows from the customer, through the Project Manager, to the Supervisor, to the crew. Communication between all parties is coordinated via written communication, on-site radios and cell phones, as well as telephones. Please note that this is a very general overview of the practices and procedures. More specific details would depend on the exact nature of the work (whether lock out/tag out procedures apply, whether the work is installing sheet piling, repairing concrete, inspection only and if so, the level of inspection, etc.) All work is performed in accordance with OSHA and other governmental regulations, the safety requirements of our customer, and in accordance with our own strict safety requirements which exceed those required by any governmental body.

Experience and Qualifications

Experience/Qualifications

Eastern Marine Services, Inc. has performed numerous commercial diving and marine construction projects of every size and nature, including but not limited to:

- Underwater inspections of ships, piers, bridges, and other structures
- Dam Rehabilitation
- Installation of Submarine Cable
- Sheet Pile Removal, Underwater Burning and Welding
- Video Inspections of Sewer Lines
- Plant Maintenance in wastewater treatment facilities and nuclear power plants
- Pile Driving and Repair

- Cathodic Protection, Anode Installation, Pile Jacketing, Pile Wrapping
- Substructure Repairs
- Salvage of submerged vessels; recovery of submerged vehicles and lost equipment, anchors, drill heads, and other articles

Project References

Rehabilitation of I-95

Contract T201907404.01 Deldot

General Contractor: J.D.Eckman

610.593.5143

-Substructure Repair and Pile Jacketing

Eastern Marine was contracted to inspect and remove spalling concrete, jacket the affected area, reinforce area, construct form work and Backfill with epoxy grout.



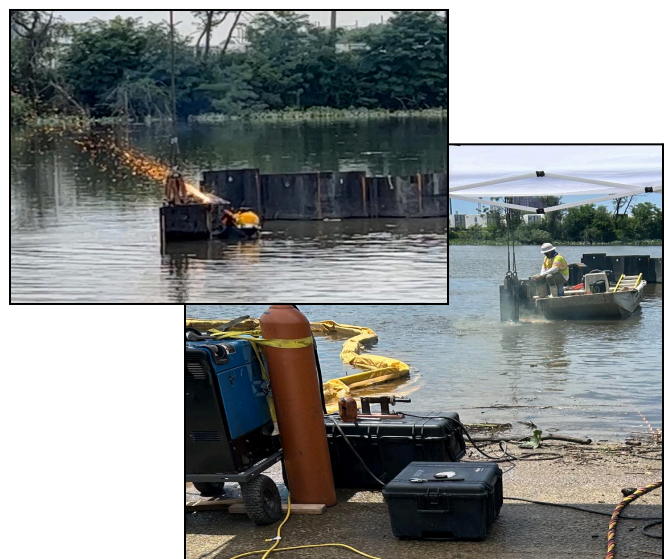
7th Street Boat Ramp

Mumford and Miller

302-378-7736

-Sheet Pile Cofferdam Removal

Eastern Marine was contracted to remove the sheet pile cofferdam by method of Broco exothermic cutting rods. Working with the Assistance of a crane. Underwater welding was performed to emplace ground clamp Mechanisms.



US - 301 Over Chester River

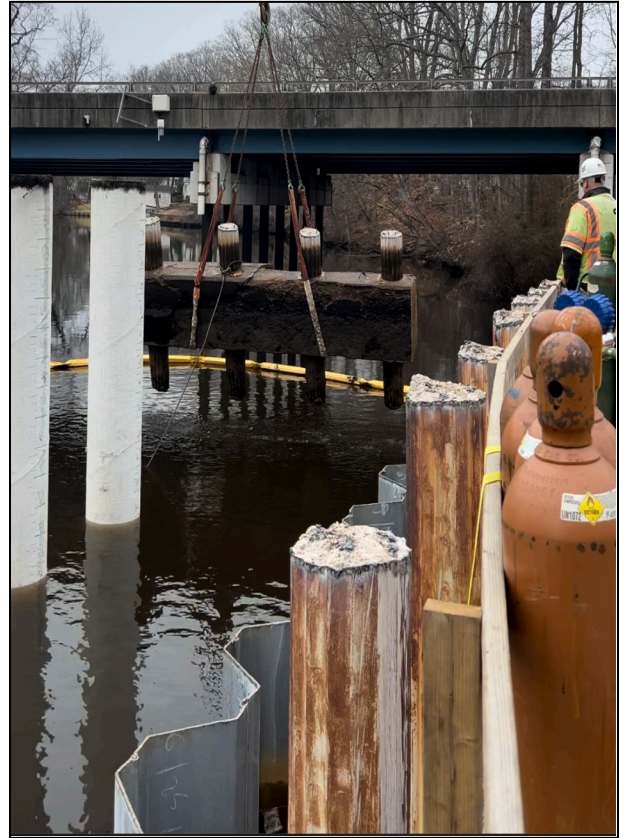
S.H.A Contract QA1845180

JJID

302.544.1408

-Removal of Steel Monotube Piles

Eastern Marine was contracted to remove the existing bridge support piles to various elevations below the mudline. Operations involved: Dredging, Jetting, Broco Burning, Underwater welding, Hydraulic underwater hammering and rigging.



Rehabilitation of BR 1-451 on N455 Blackbird Landing Road

Contract T 202107402

JJID

302.544.1408

-Pile Jacketing, Dredging, Emplacing and Pumping Concrete Grout Bags

Eastern Marine was contracted to dredge to elevation under the bridge. Install pile Jackets. Place grout bags under water in various locations under the bridge for scour protection. The bags were then pumped with 116.43 cubic yards of concrete.



Pile Jacketing Sussex County FY23

T202207901

Eastern Highway Specialists

302.777.7673

-Pile Jacketing

Pile Jacketing was performed on four different bridges located throughout Sussex county DE. The project was a total of 523 LF of pile jacketing.



Pile Jacketing, Kent and Sussex County, FY 22

T202107022

Eastern Highway Specialists

302.777.7673

-Pile Jacketing

Eastern Marine Services was contracted to perform Pile Jacketing in various locations throughout Kent and Sussex County in the amount of over 767 LF. The project had additional linear footage due to Carpenter Bridge needing a custom repair that was outside of the scope of the original contract. Eastern Marine worked with engineers to come up with a solution that appeased DelDot and expeditiously put the work into effect finishing on an accelerated time table completing the project on the original time frame.



Rehabilitation of Bridge 2-010A On SR-6 Woodland Beach Road

T202007504

Eastern Highway Specialist

302.777.7673

Eastern Marine Services was contracted to perform 776 LF of Pile Jacketing on bridge 2-010A. The jackets were emplaced in the mudline in various locations and midwater in other locations.

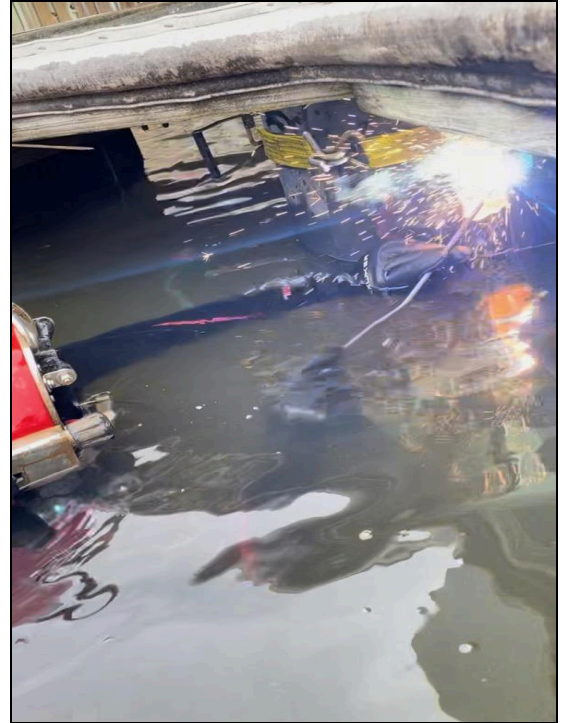


Harborview Marina

Wes Strong

410.752.1122

Substructure Repair by method of underwater welding steel reinforcement collar into preexisting steel H piles. Welding of steel reinforcement collars on steel pipe piles. Pile Jacket Repairs. Emergency Barge repairs. Anode Installation.



Charles County Jameson Dam

Keith Roumfort

310.932.3591

Emergency Sluice Gate Repair

Eastern Marine Services was brought in to investigate a failing sluice gate. After the inspection EMS worked with engineers to repair the sluice gate on an accelerated schedule to meet the demands of the client and solve an emergency issue. Eastern Marine was then contracted to install a new trash rack and ladder system while under emergency protocol.



Del Carlia Forebay Commercial Floating Dock

Yash Domandi

443-784-7683

Commercial Floating Dock Installation for US Army Corps of Engineers

Eastern Marine Services was hired to install a commercial floating dock system for access to the forebay dredging operations system. EMS conducted pile driving operations at the shoreline which was the keystone operation for the ADA compliant gangway (EMS installed) and staircase (Installed by others). Assembly, Launch, and Installation of the commercial floating dock.



MES Pipe Swale/Cradle

Robert Natarian

410.980.5958

Eastern Marine Services was hired for the construction of a cast in place reinforced concrete pipe swale/cradle for outfall pipe extension



Northridge Dam and Spillway Rehabilitation

Benjamin "CJ" Harris

240.508.5059

City Of Bowie

Eastern Marine Services was contracted to make repairs within the dam's concrete spillway pipe.

The spillway was then upgraded and reconstructed using geotextile material and Rip Rap after being regraded.

